

14 september 2009

Välkomna!

Det virtuella läkemedelsbolaget:
Våga ta steget – från idé till projekt

Det virtuella läkemedelsbolaget

08.30-09.00 Registrering
Kaffe och fralla

09.00-09.05 Välkommen,
Moderator
Tor Regberg, SSCI

09.05-09.25 Vad händer i Stockholm - Life Science
Teresa Soop, SSCI

09.25-09.30 Ip Management hos det virtuella läkemedelsbolaget
Anders Bratt, Bergensträhle & Lindvall

09.30-10.00 Hur ökar man sannolikheten att lyckas med att utveckla ett nytt läkemedel? - mina egna erfarenheter
Thomas Uhlin, Aprea

10.00-10.15 Paus

10.15-10.45 Who gets funded?
Björn Odlander, HealthCap, Jonas Hansson, HealthCap

10.45-11.15 Från noll till hundra
Hans-Peter Ekre, Karolinska Development

11.15-11.55 Diskussion:
Thomas Uhlin, Aprea
Björn Odlander, Health Cap
Jonas Hansson, Health Cap
Hans-Peter Ekre, Karolinska Development

12.00-13.00 Lunch och mingel

Networking Coach: Mary-Rose Hoja, Mingla Mera

Värd:



Partners:



Karolinska Institutet
Science Park AB

The Swedish Life Science Library Organization
swedenBIO

Sponsor:

BERGENSTRÄHLE & LINDVALL

**TOOLS
OF SCIENCE**
www.toolsofscience.se

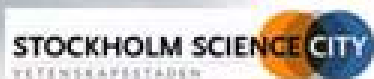
Utställare:
BERGENSTRÄHLE & LINDVALL
Syntagon
MEIRA MEDICAL
Mingla Mera
Analyscentrum



14 september 2009

Vad händer i Stockholm - life science

Teresa Soop, PhD



Stockholm Science City



- 70 000 studenter
- 6 000-7 000 forskare
- Stor andel life science bolag

Planerad utveckling → 2025

Karolinska Institutet

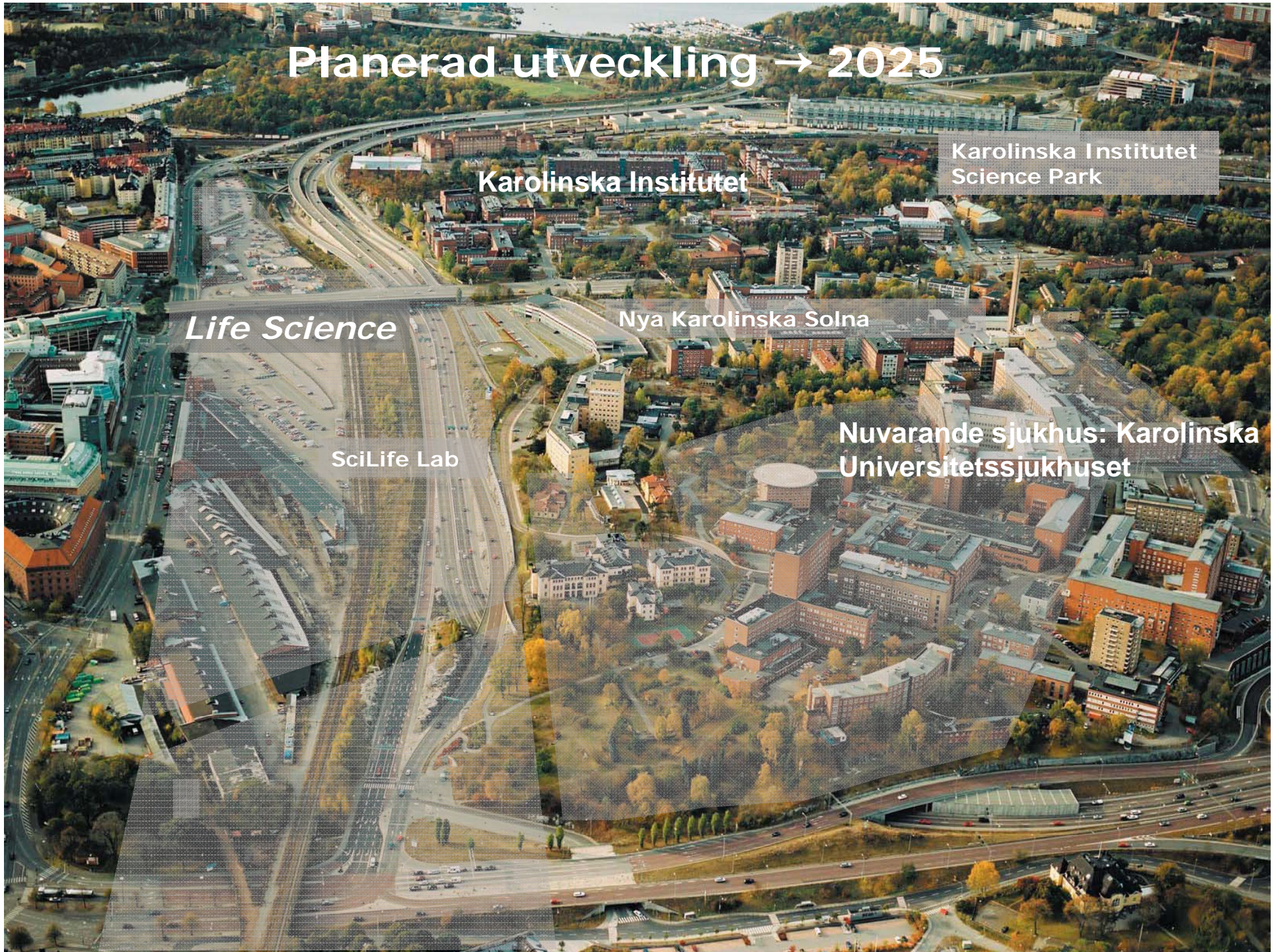
Karolinska Institutet
Science Park

Life Science

Nya Karolinska Solna

SciLife Lab

Nuvarande sjukhus: Karolinska
Universitetssjukhuset



Science for Life Laboratory: "SciLife Lab"

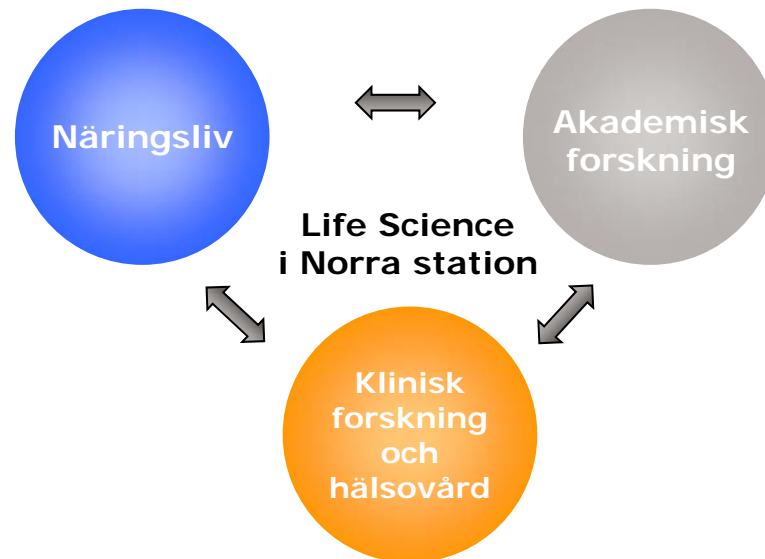
- Nationellt centrum inom high-throughput bioscience
- Fokus på molekylär biovetenskap
- Världsklass!
- Karolinska Institutet, KTH och Stockholms universitet
- Start 2010
- Verksamhetsansvarig: Fredrik Sterky

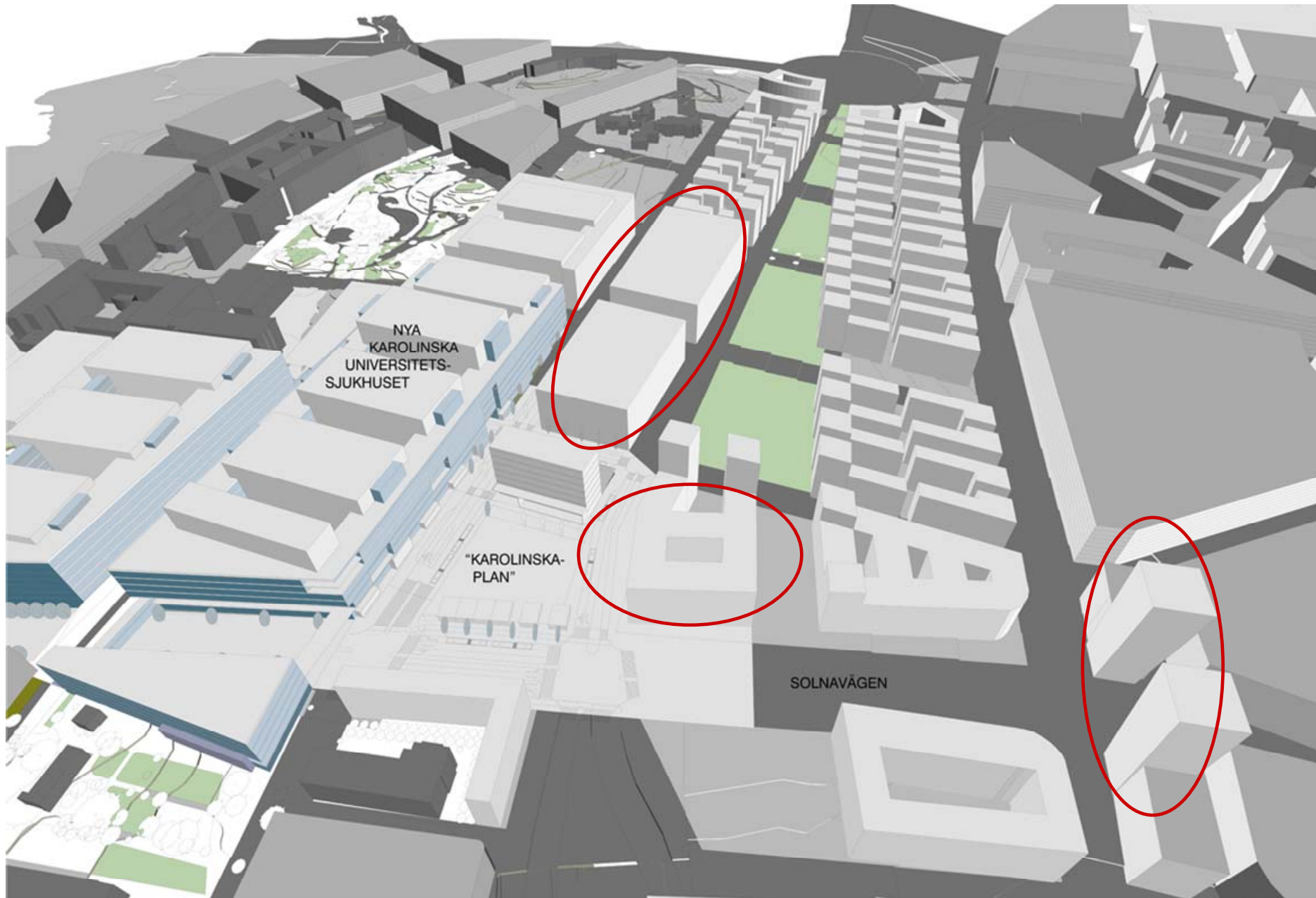
NKS: Nya Karolinska Solna



Vision för life science i Norra station

- **Skandinaviskt centrum** och **Europas ledande område** för life science
- En **plats** där **näringsliv, akademi, klinisk forskning och sjuk- och hälsovård** kan mötas och samverka
- En **attraktiv** och **kreativ miljö** för verksamheter inom life science





NYA
KAROLINSKA
UNIVERSITETS-
SJUKHUSET

"KAROLINSKA-
PLAN"

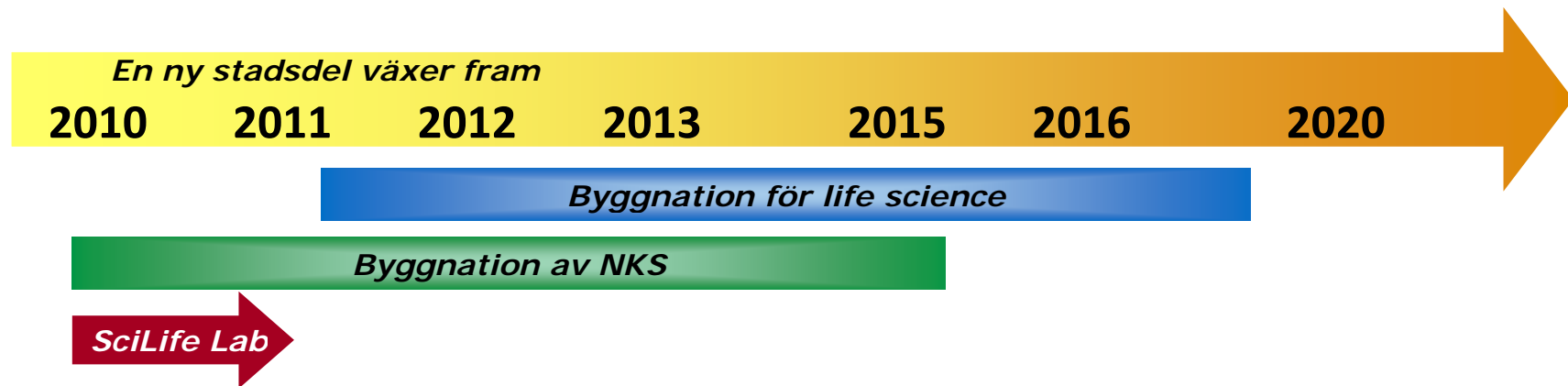
SOLNAVÄGEN

Life Science i Norra station – *en kreativ miljö och mötesplats*

- Neutral arena
- Translationell forskning och utveckling
- Diversitet
- Bred service
- Stark infrastruktur
- Mötesplats
- Modernt koncept med ekologisk profil
- Ca 100 000 m²



Utvecklingen av life science i Norra station



Tools of Science

- Ett verktyg för alla inom life science
- Information om tjänster inom life science
- www.toolsofscience.se



> [Browse Academic Tools of Science](#)

> [Browse Industrial Tools of Science](#)

- CRO

- [Analysis](#)
- [Clinical trials and Regulatory](#)
- **[Drug discovery and development](#)**
- [Experimental platforms](#)
- [Manufacturing](#)
- [MedTech](#)

- Services

- [Business development](#)
- [Communication/translation](#)
- [Consulting](#)
- [Intellectual property](#)
- [Investment and innovation support](#)
- [Management](#)
- [Recruitment](#)
- [Transport](#)

- A-Ö

> [Research projects](#)

> [News/events](#)

> [About Tools of Science](#)

Owned and maintained by



INDUSTRIAL TOOLS (13)

ORGANISATIONS (13)

CONTACT PERSONS (16)

Drug discovery and development

13 Industrial Tools related to Drug discovery and development sorted alphabetically

<< 1 / 2 >>

Actar AB

(Björn Kull)

An idea-to-innovation tool for researchers –Actar AB identifies drug targets generated from research conducted at Swedish universities and performs drug development. Through high-throughput screening of low molecular weight molecule libraries in innovative and relevant model systems, lead compounds are identified. The lead compounds are thereafter transferred to the medical industry for further development into candidate drugs. Actars Scientific Advisory Board ensures the optimal evaluation of an » [more](#)



Analyscentrum

(Erik Ronne)

Analyscentrum performs chemical research and analysis, and believe that we can help you to do trace amount analysis, increase your R&D workflow, meet important deadlines, and develop new methods for your own laboratories. Analyscentrum performs physical-chemical studies according to GLP and is approved by SWEDAC. » [more](#)



Avaris AB

(CEO Mats Lake)

Avaris is a biotechnology company that develops and commercializes cutting edge gene and cell therapy products in the fields of chronic infections, cancer and inherited diseases. We develop proprietary technology platforms within the founders groups at the Karolinska Institute, Huddinge. Bringing forward new methods of treatment can be based on our platforms, ensuring value for the future. The unique portfolio gives Avaris a mass of knowledge and resources to recruit further innovations. Avaris i » [more](#)



Beactica

(CEO Per Källblad)

Beactica is a specialist drug discovery company, utilising its proprietary methodologies to evaluate the biophysical interaction of molecules in order to generate novel therapeutics. Founded in 2006 based on research carried out at Uppsala University, Beactica has established a robust reputation as a leader in SPR-based drug discovery. As well as building collaborations with external companies, Beactica is progressing its own drug discovery programmes. » [more](#)



SEARCH

» SEARCH

» [Advanced Search](#)

OVERVIEWS

- » [Sitemap](#)
- » [Organisational Structure](#)
- » [Contact Persons](#)

LAST PAGES (3/14)

[show all](#)

- » [Navigation Field: Browse Industrial Tools of Science](#)
- » [Search: gullberg](#)
- » [Search: galli](#)

MY FAVOURITES (0/0)

[show all](#)

My Favourites is empty

TOOLS OF SCIENCE

MEIRA MEDICAL

iNovacia

IRW
Consulting AB

>KLIFO

QUINTILES[®]

CYBERGENE AB

STRICTENT

Beatus Consulting

LB

LSM Lab

Evitra
When you need help to express yourself

MILLIPORE

:C:R:
:C:R:
:C:R:

Edsman Medical Writing

CYBERGENE AB

ENCORIUM

BSG
BioSeeker Group

WORLD COURIER[®]

Colloidal Resource

scandinavian outcomes III

actar

AIESEC

BEACTICA[™]

Syntagon

avaris

SymCel

Vironova

PCG

Ola Levin Consulting AB

MediGelium AB

Alexander Hughes
EXECUTIVE SEARCH CONSULTANTS
Founding Member of AEA International Search

a+ SCIENCE

ARANDI DEVELOPMENT

NordicBlue AB

RegMan

KEMWELL



IsoSep[®]

Pronexus analytical

MedGate

BERGENSTRÄHLE & LINDVALL



Battison & PARTNERS



QUINTILES[®] TRANSNATIONAL

sweden BIO
EU Support Office

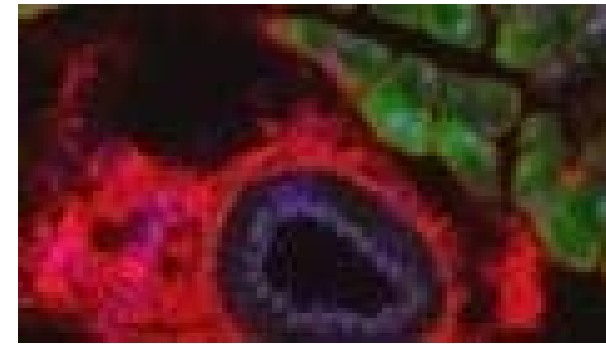
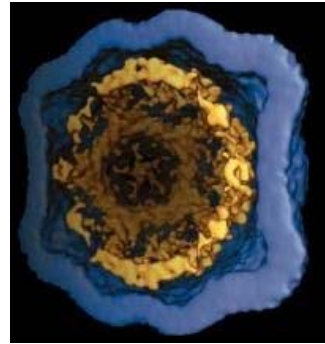
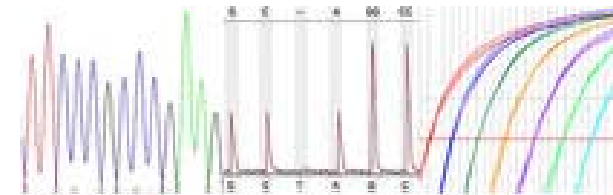
Ola Levin Consulting AB

Ekvik International

Analyscentrum
Partners in Chemical Research and Analysis

Akademiska Tools of Science:

- Karolinska Institutet, KTH, Stockholms universitet och Karolinska universitetssjukhuset
- Kategorier:
 - Core facilities
 - Equipment
 - Specific techniques



Tools of Science...

- Samlad och komplett information
- Lätt att använda
- Uppdaterad
- Gratis och öppen
- 2 000 besök/vecka
- www.toolsofscience.se

 **Syntagon**

MEIRA MEDICAL

Analyscentrum

Partners in Chemical Research and Analysis



ENCORIUM

Mingla Mera

BERGENSTRÅHLE  **LINDVALL**

STOCKHOLM SCIENCE CITY
FOUNDATION 