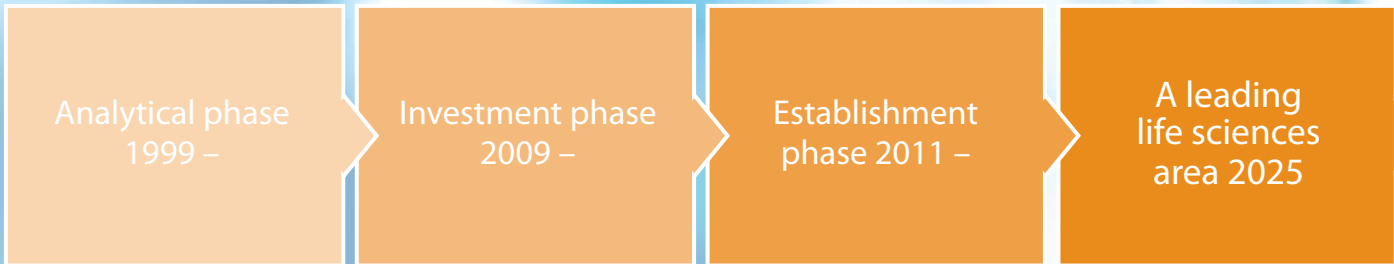


Life sciences comprise science areas ranging from medicine, biology and chemistry to technology, informatics and materials science. All activities in the field of life science aim to improve people's health.



A leading life sciences area

10 november 2009



Karolinska-Norra Station

– a leading life sciences area

Karolinska-Norra Station will become the world's leading area for life sciences. The planning and coordination between the various actors have been ongoing for more than a decade. The first step towards implementation has now been taken. A number of large actors have jointly agreed to develop an area for life sciences in a modern urban environment.

Investment in the area are estimated at about SEK 50 billion over the next 15 years. The development is thereby the largest ever investment in Sweden. Jointly behind the investment are universities, society and business, a so called triple helix.

Stockholm Science City's mission is to promote the establishment and development of life science activities in the area. Academic research, clinical trials, medical and health care as well as businesses will meet in a dynamic environment where interesting ideas can be developed and commercialized.

The first new projects

The new university hospital Nya Karolinska Solna, a highly specialized hospital, will create unique opportunities for synergies between research and clinical application.

Science for Life Laboratory – SciLifeLab – is a unique collaboration between Karolinska Institutet, the Royal Institute of Technology and Stockholm University in

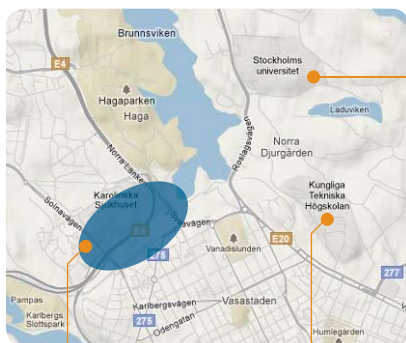
partnership with Uppsala University. An advanced laboratory within the fields of genomics and sequencing.

Across the street from Nya Karolinska Solna University Hospital, four blocks dedicated to life science activities will be developed in collaboration with property developers Oslo Naeringseiendom. Oslo Naeringseiendom will also build two towers, Tors torn, which will serve as a gate to the area. One tower will accommodate activities linked to life sciences and the other a hotel. Other property owners in the area are also planning research and business activities within the field of life sciences.

THE ACTORS BEHIND STOCKHOLM SCIENCE CITY

- City of Stockholm
- City of Solna
- Stockholm County Council
- Karolinska Institutet
- Royal Institute of Technology
- Stockholm University
- Axel and Margaret Ax:son Johnson Foundation
- Knut and Alice Wallenberg Foundation
- Göran Gustavsson Foundation
- Kjell and Märta Beijer Foundation

A LIFE SCIENCE AREA WITH CUTTING EDGE COMPETENCE



NATURAL SCIENCES
Stockholm University has Sweden's largest faculty of natural sciences

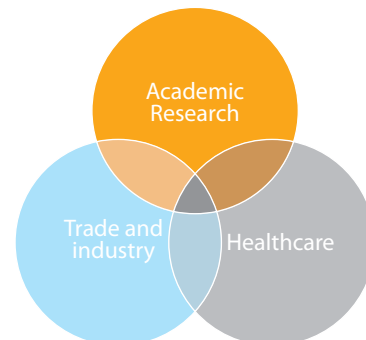


MEDICINE
Karolinska Institutet is a leading university hospital.



TECHNOLOGY
The Royal Institute of Technology is responsible for one third of Sweden's technical research.

Academic Research
The three academic institutions will create the Science for Life Laboratory which will be a national resource and a cutting edge laboratory in the field of genomics.



Trade and industry
Businesses will be present at Karolinska-Norra Station – everything ranging from small companies that have just grown out of the university's incubator to multinationals.

Healthcare
The system of personal identity numbers, databases and registers make Sweden a particularly interesting place for clinical research and follow-up. Nya Karolinska Solna University Hospital plays an important part in this.

A Unique Area

The right prerequisites

Three prominent universities with over 70,000 students are just a short stroll away from Karolinska-Norra Station. The departments of natural sciences at the universities together create one of the leading academic institutions in Europe within its field. Karolinska University Hospital, the Swedish Institute for Infectious Disease Control and the European Centre for Disease Prevention and Control are located in Karolinska-Norra Station. Uppsala University is located only 60 kilometers away. Some 450 of Sweden's estimated 800 life science companies, the located in the Stockholm-Uppsala region.

Science centers in modern surroundings

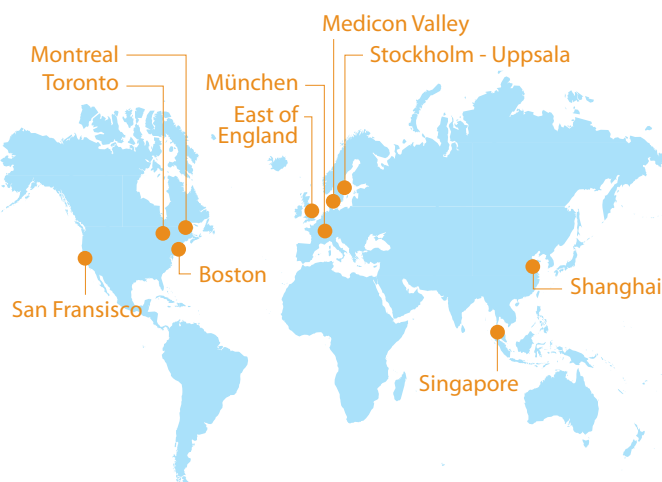
Karolinska-Norra Station will have a mix of academic institutions, businesses, research institutes, hospitals, cafés, and restaurants. It will be a dynamic and modern city district encompassing 36,000 office spaces and 5,500 homes.

An important part of the development of

Karolinska-Norra Station is the covering over of the highways E4/E20 and the rail system Värtabanan. Stockholm and Solna will be joined and the new city district will belong to both municipalities. There is scope for scientific and industrial development in the area.

Karolinska-Norra Station will be an attractive area in which to live and work for people of all ages and in all stages of life. With good transport links, close proximity to two international airports, walking distance to the capital's financial centre and a good range of cultural amenities, the city district is close to everything.

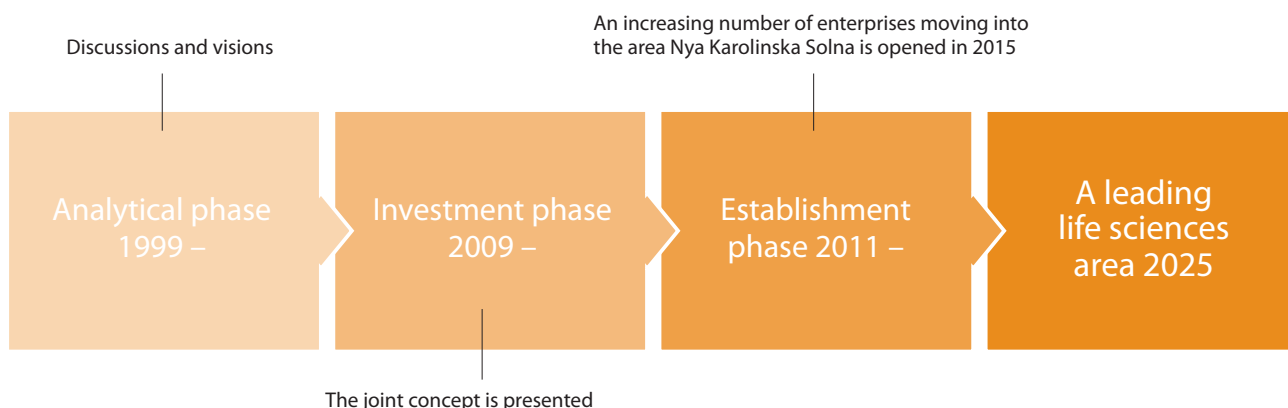
THE WORLD'S LEADING LIFE SCIENCE CLUSTER

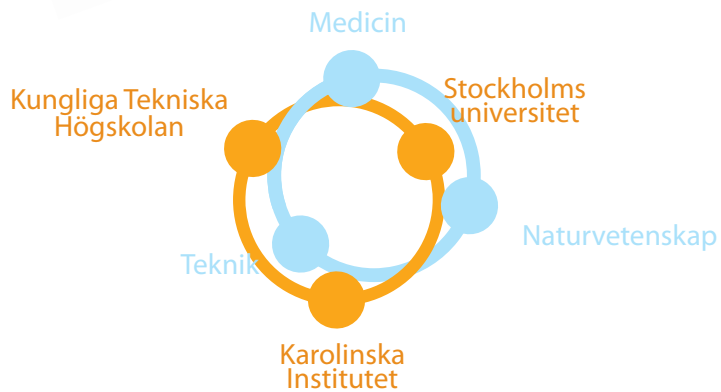
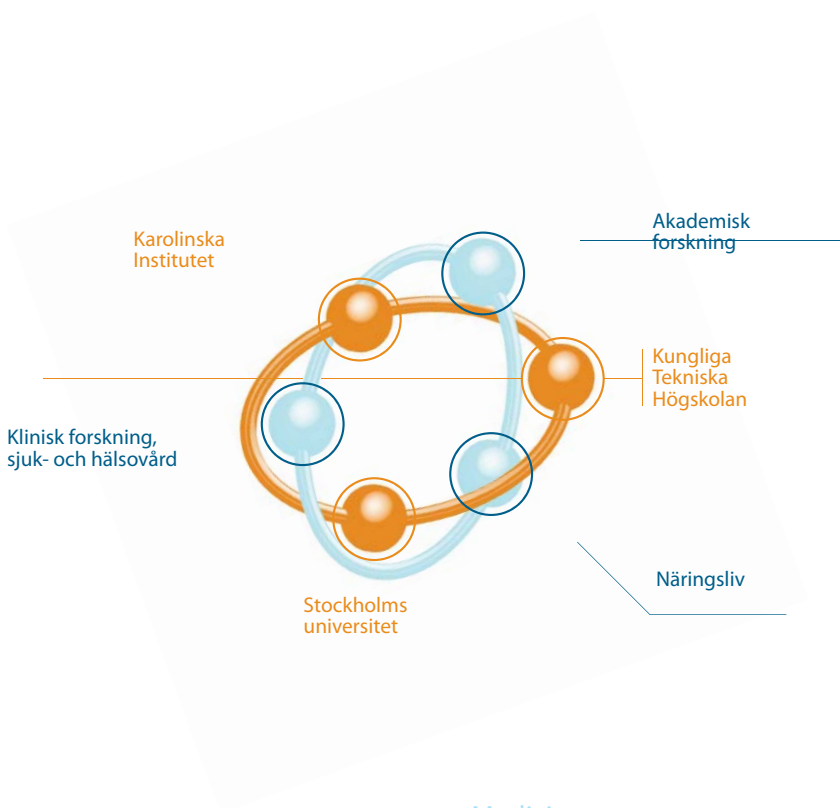
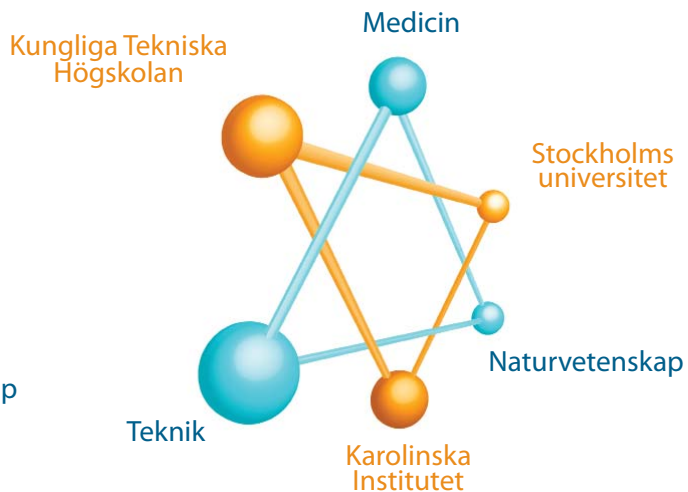
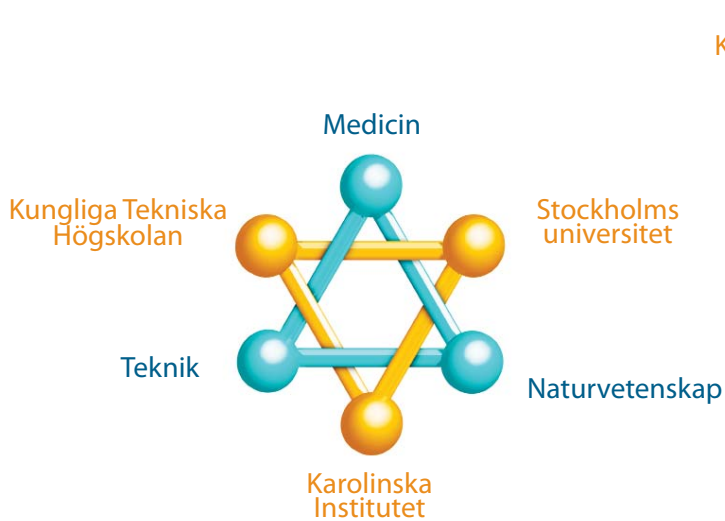


A RECORD INVESTMENT

- Investment equivalent to 2 ½ Öresund bridges
- Employment equivalent to that of the municipality Skellefteå
- Total area equivalent to nearly three times the size of Gamla Stan
- Office space equivalent to 24 Hötorg skyscrapers

THE AREA'S DEVELOPMENT DURING THE NEXT 15 YEARS





THE WORLD'S LEADING AREA FOR LIFE SCIENCES



- Total investment around SEK 50 billion
- 5,500 new homes
- 36,000 employments
- Occupancy from 2013
- Cover over of highway E4/E20
- Completion in 2025
- New university hospital, Nya Karolinska Solna
- About 600,000 m² intended for life sciences, excluding the University Hospital, of which 400,000 m² are new

THE FIRST INVESTMENTS



NYA KAROLINSKA SOLNA UNIVERSITY HOSPITAL

- Highly specialized healthcare
- The most modern university hospital in Europe
- Total surface of some 335,000 m²
- 800 hospital beds
- Expected opening in December 2015



FOUR LIFE SCIENCE BLOCKS

- Intended for life science activities
- 25 metres from Nya Karolinska Solna University Hospital
- 40,000 m² office space
- 3000 employments
- Expected occupancy 2017-2018



SCIENCE FOR LIFE LABORATORY (SciLifeLab)

- World class centre for the mapping of genes and proteins relevant to common diseases
- Joint investment by Karolinska Institutet, the Royal Institute of Technology and Stockholm University in partnership with Uppsala University
- Opening in 2010, employment for around 75 people expected
- Expected employment in 2011: 220 people



TORS TORN

- Two 140 meter tall towers on Torsgatan which will form a gate. 22,000 m² per tower.
- Expected occupancy as from 2015 – 2016
- Premises for life sciences in the whole of the eastern tower
- Hotel planned in the western tower

For more information, please contact:
Stockholm Science City
tel: +46 8 522 110 40, e-mail: info@ssci.se
www.ssci.se